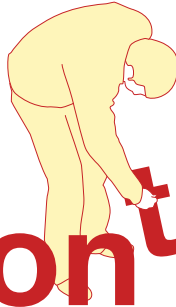
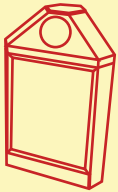


# Instruction Manual





# Contents



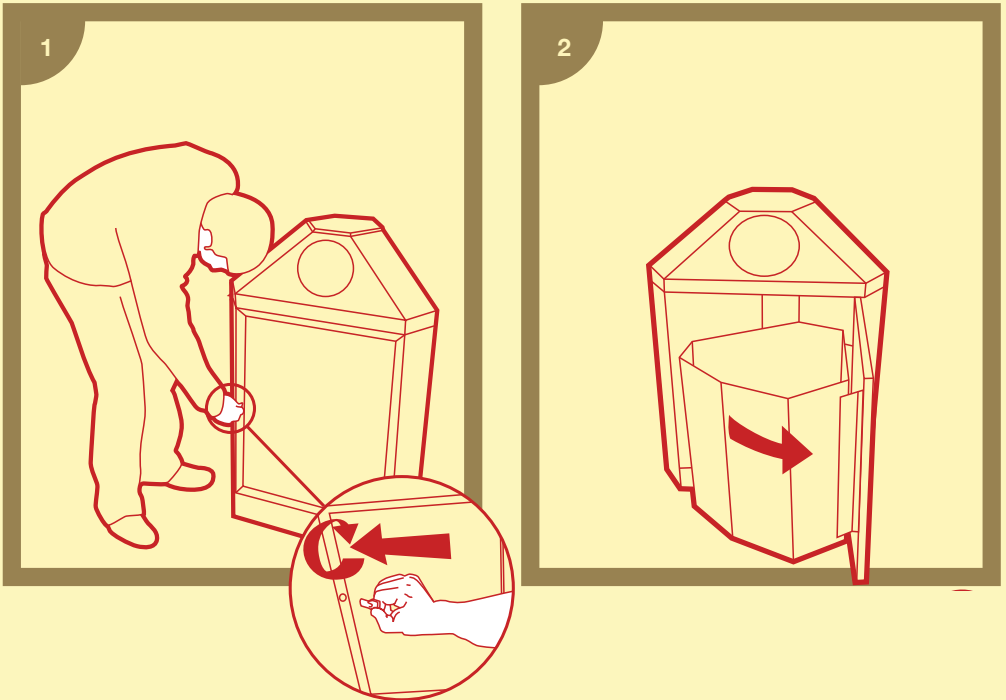
<b>Bin Access &amp; Bag Removal</b>	<b>4</b>
<b>Poster &amp; Perspex Access &amp; Maintenance</b>	<b>6</b>
<b>Maintenance &amp; Stain Removal</b>	<b>8</b>



<b>Bin Access &amp; Bag Removal</b>	<b>10</b>
<b>Poster &amp; Perspex Access &amp; Maintenance</b>	<b>12</b>
<b>Maintenance &amp; Stain Removal</b>	<b>14</b>

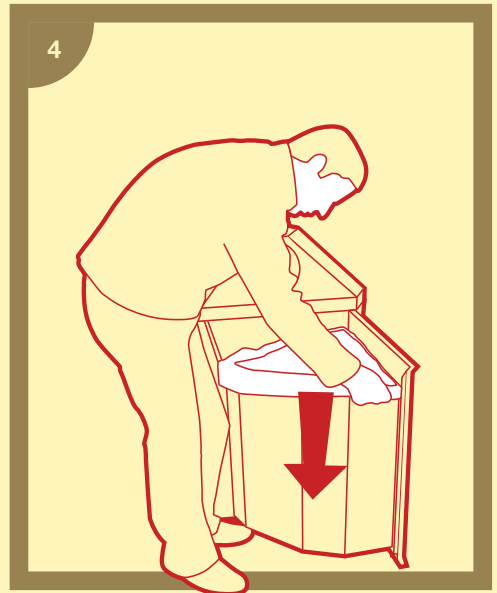
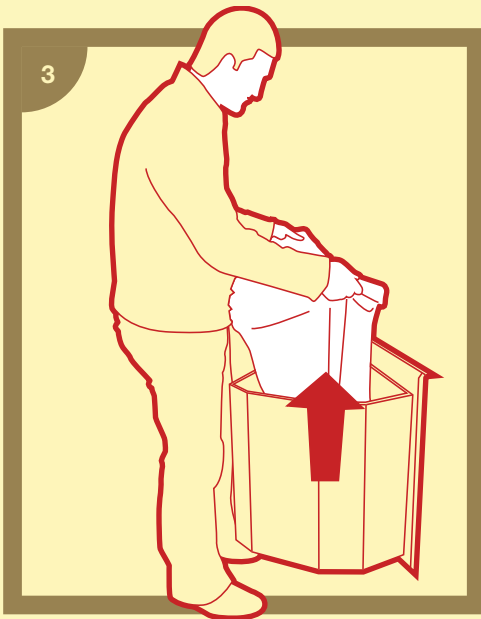
# Bin Access & Bag Removal

1. Insert the key into the lock and twist to open the door
2. Once open, you will find the inside container attached to the inside of the door. This ensures easy removal/replacement of the bin liner



3. The bin liner is easily removed/replaced without having to take out the inner container. To empty, simply lift out the bin liner

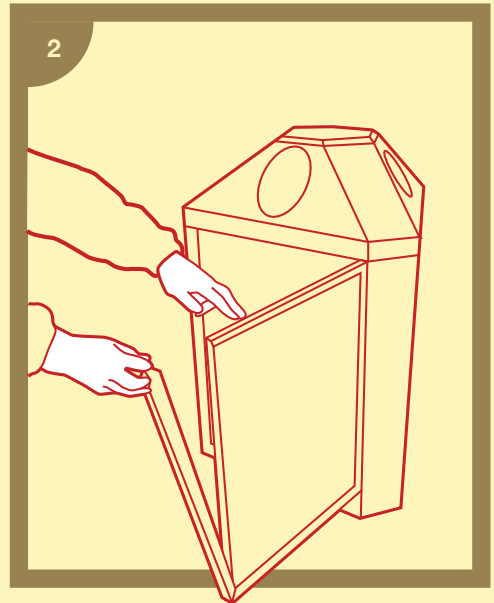
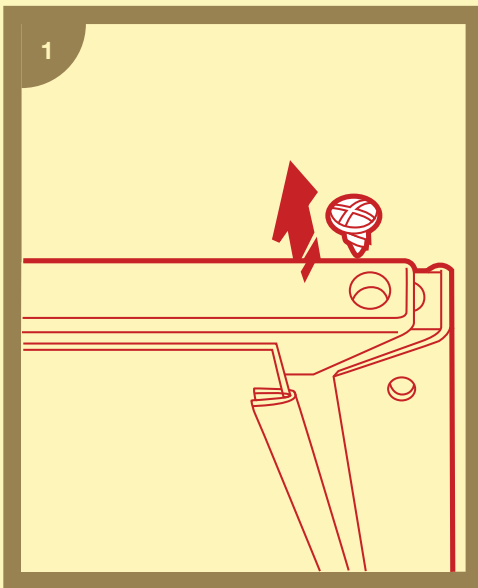
4. To replace the bin liner, simply insert the bag into the container and fold over the outside edges. Once finished, close the door until it locks



# Poster/Perspex Access & Maintenance

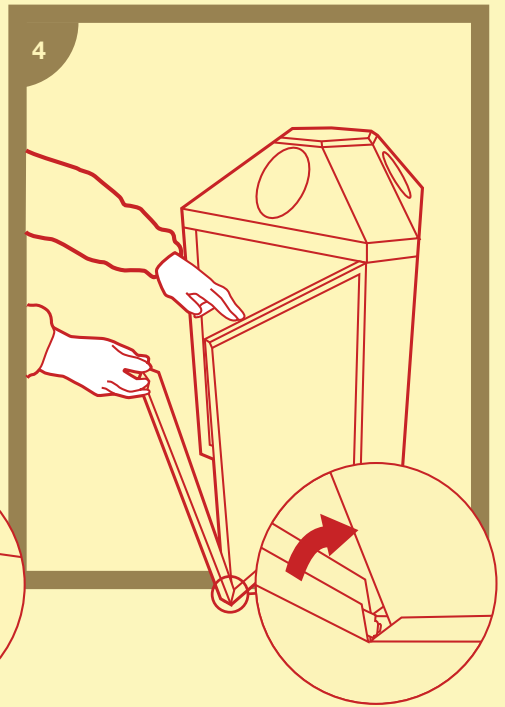
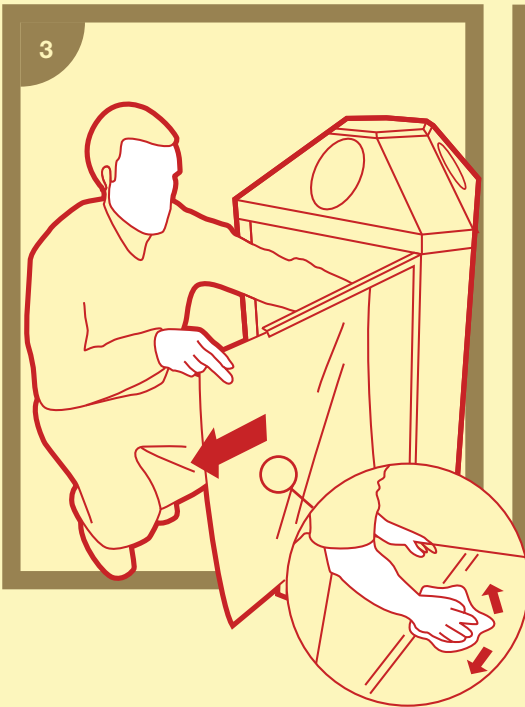
1. To access poster and perspex, open the door and use a phillips screwdriver to remove the upright bar

2. Once the screw has been removed, pull the bar off from the top



3. Slide perspex out. To clean use a soft cloth and glass spray. Always ensure there is no paper residue on the perspex. Once clean, ensure the perspex is dry before replacing the poster. Place poster behind the perspex and slide both back into the frame

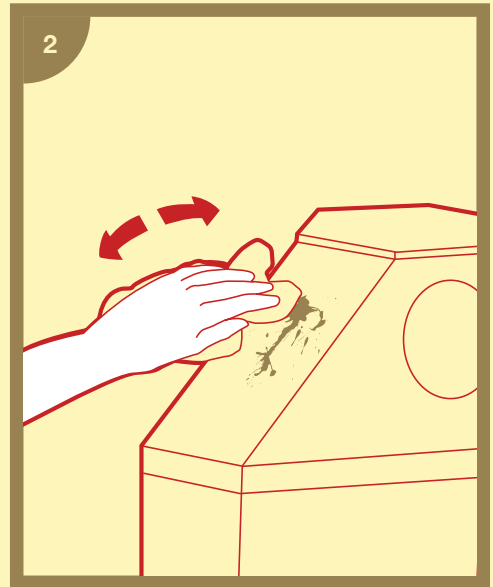
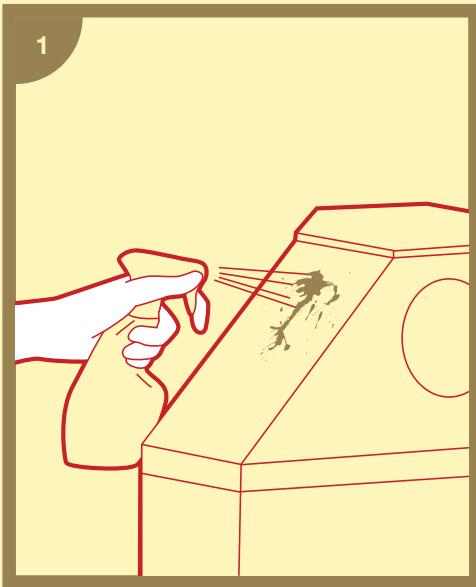
4. Place bar into the joint and ensure perspex and poster are behind the frame. Insert screw and gently tighten - but not too tight



# Maintenance & Stain Removal

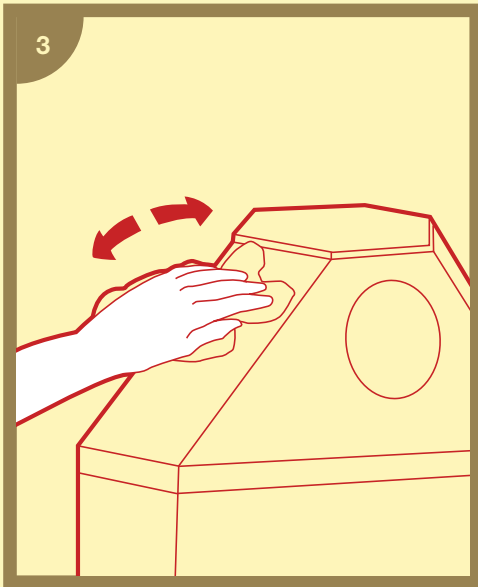
1. Spray the bin with appropriate stainless steel cleaner. Also spray the perspex

2. Wipe with a soft cloth until grime is removed



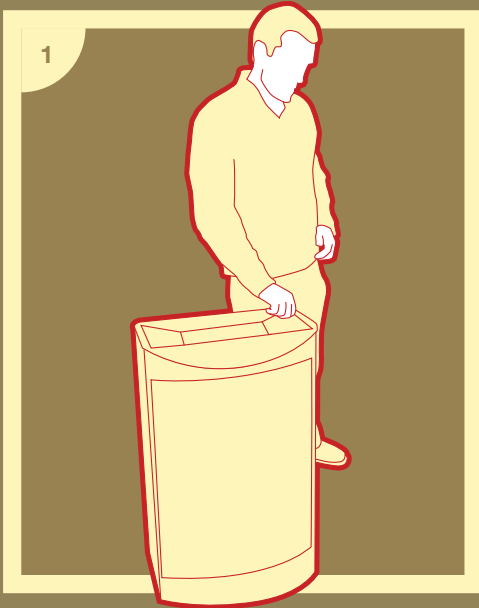
3. Apply baby oil to cloth and polish stainless steel until buff

\* Micro fibre cloths together with water can be used instead of baby oil and stainless steel cleaner



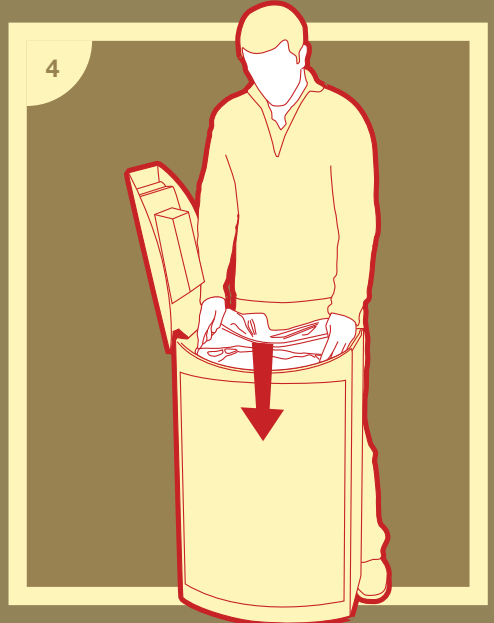
# Bin Access & Bag Removal

1. Place the key into the lock and twist to open
2. Lift the lid gently with your hand to open



3. Bin liner is easily removed/replaced without needing to remove the inner container. To remove bag, simply lift out

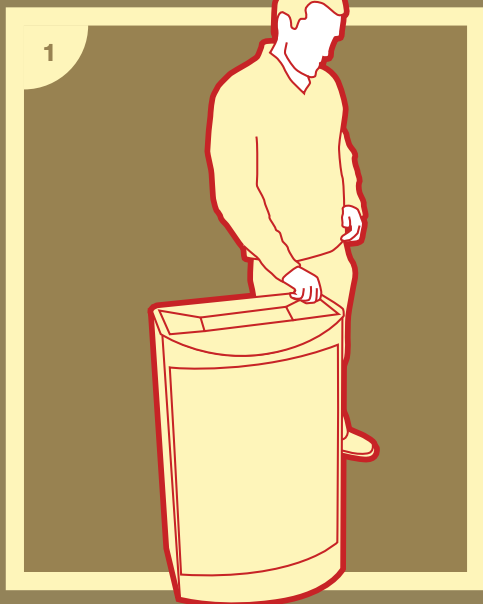
4. To replace bin liner, simply insert it into the inner container and secure by folding it over on top of the container. Gently close the lid holding it all the way down until shut



# Poster/Perspex Access & Maintenance

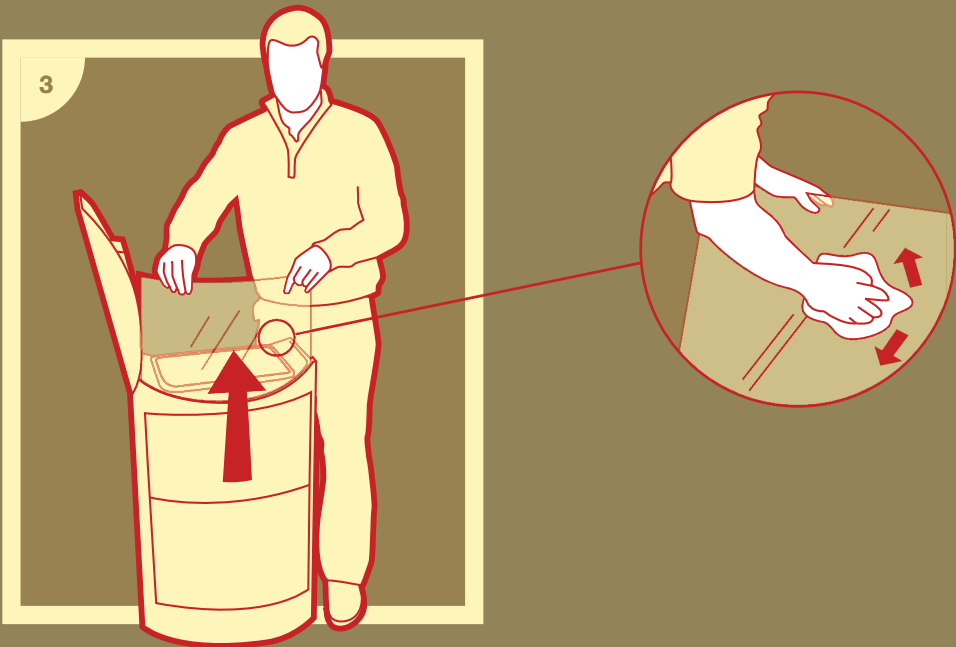
1. To access the poster/perspex, open the lid with the key

2. Lift the lid gently with your hand



3. Slide perspex out. To clean use a soft cloth and glass spray. Always ensure there is no paper residue on the perspex. Once clean, ensure the perspex is dry before replacing the poster. Place poster behind perspex and insert into the frame.

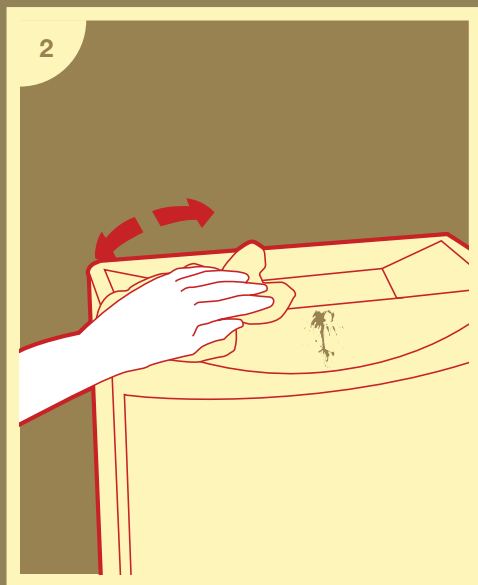
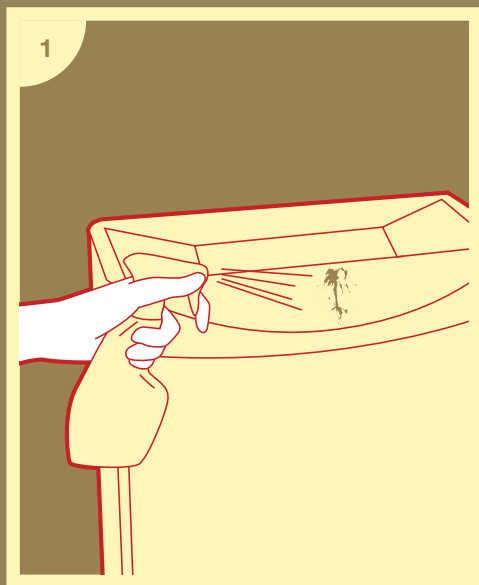
Gently close the lid holding it all the way down with your hand. Shut gently



# Maintenance & Stain Removal

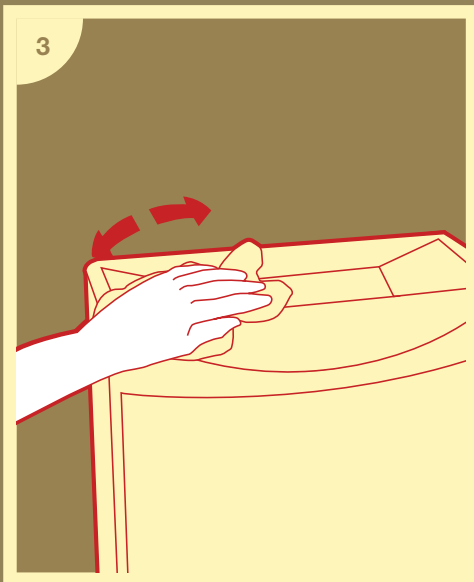
1. Spray the bin with appropriate stainless steel cleaner. Also spray the perspex

2. Wipe with a soft cloth until grime is removed



3. Apply baby oil to cloth and polish stainless steel until buff

\* Micro fibre cloths together with water can be used instead of baby oil and stainless steel cleaner



5 Fitzwilliam Place  
Dublin 2  
Tel: +353 1 506 5630  
Mob: +353 86 825 2600  
[www.citybox.ie](http://www.citybox.ie)

Abbey House,  
18-24 Stoke Road,  
Slough, Berkshire, SL2 5AG  
Tel: 0845 68 00 871  
Mob: +44 7747 1188 68  
Email: [peter@citybox.ie](mailto:peter@citybox.ie)  
[www.citybox.ie](http://www.citybox.ie)